

## TECHNICAL DATA SHEET

# Plastic pipe clamp CLIC 63–127

## 1. Product description

The most efficient mounting system for pipes, cables and many other applications. Diameter dimensions ranging from 63 to 127 mm for indoor area.

## 2. Application areas

- Building drainage
- Installation technology
- Chemical industry
- Electrical installations for infrastructure
- Sanitary installations (hot and cold water pipes)

## 3. Features

- One-piece, self locking plastic pipe clamp
- Tool-free installation system
- Very high dynamic load and stress corrosion crack stability
- Very low moisture absorption
- Wide range of mounting temperature from -25 °C to +70 °C
- Mounting with metrical or wood screws
- Approved by: UL (1565/2043)
- 100 % made in Switzerland

## 4. Material data

Material quality	Polyamide PA 6
Density at +20 °C	1.13 g/cm <sup>3</sup>
Elongation at yield	3.5 %
E-Modulus in tension	3000 MPa
Water absorption at 23 °C	8 %
Moisture absorption (23 °C / 50 % r.F.)	2.5 %
Dielectric strength	28 kV/mm
Weather proof	-25 °C up to +70 °C
Maximum service temperature short term	+100 °C
Maximum service temperature long term	+70 °C
Flammability	HB according to UL 94
Impact value (Charpy, +23 °C)	3.5 kJ/m <sup>2</sup>
Impact value (Charpy, -30 °C)	3.5 kJ/m <sup>2</sup>
Halogen	halogen free as per IEC 754-2
Petrol, diesel, oil	resistant
Corrosion	resistant
Chloride salt	resistant
UV	not resistant
Standard colours	light grey (similar to RAL 7035)

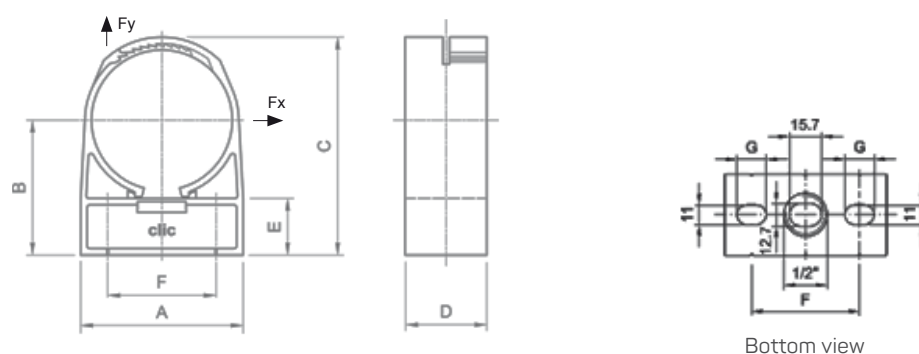


TECHNICAL DATA SHEET – CLIC 63–127

### 5. Technical data

Type	Clamping range [mm]		A [mm]	B [mm]	C [mm]	D [mm]	E [mm]	F [mm]	G [mm]	Breaking load [N]	
	min.	max.								Fy*	Fx*
63	63	71	78	72	115	40	31	52	11	1800	1000
71	71	80	87	77	124	40	31	58	15	2200	1300
80	80	90	98	83	136	40	31	66	16	2600	1600
90	90	101	110	89	148	40	31	76	16	3000	1900
101	101	113	124	96	163	40	31	86	17	3500	2200
113	113	127	139	105	180	40	31	102	17	4000	2500

\* with 2 screws Ø8 mm DIN 571 at +20 °C, safety factor must be considered!



### 6. Selection guide

Type	Steel pipe		Copper pipe mm	Cast iron pipe mm	PE pipe mm	PVC pipe mm	Cable-ducts metric measures M	Certification UL	Breaking load [N]	
	mm	inch							Fy*	Fx*
63					63		63	✓	1800	1000
71	76,1	2 1/2"	76	78	75	75		✓	2200	1300
80	88,9	3"	89					✓	2600	1600
90					90			✓	3000	1900
101			108	110	110	110		✓	3500	2200
113	114,3	4"	114		125	125		✓	4000	2500

\* with 2 screws Ø8 mm DIN 571 at +20 °C, safety factor must be considered!

TECHNICAL DATA SHEET – CLIC 63–127

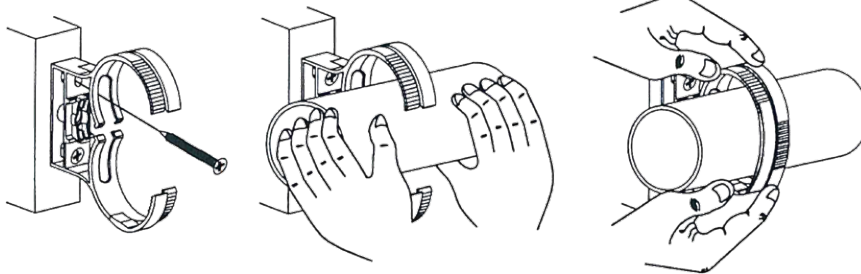
### 7. Chemical resistance

Material	Concentration	Resistance at +23 °C
Acetic acid	5%	●
Acetone		●●●
Ammonia	liquid	●●●
Benzine		●●●
Brake fluid		●●●
Butane		●●●
Butanol		●●●
Butyl acetate		●●●
Carbon tetrachloride		●●●
Caustic potash	10%	●
Chlorobenzene		●●●
Chlorine gas		●
Chloroform		●
Citric acid	10%	●●●
Decalin		●●
Dibutylphthalate		●●
Diesel fuel		●●●
Dimethyl formamide		●●●
Dimethylether		●●
Diethylphthalate		●●
Dioxan		●
Engine oil		●●●
Ethanol		●●●
Ethyl acetate		●●●
Formic acide	10%	●
Glycerine		●●●

Material	Concentration	Resistance at +23 °C
Glycol		●●●
Heating oil		●●●
Heptane, Hexane		●●●
Hydraulic oil		●●●
Hydrochloric acid	10%	●
Hydrogen fluoride		●
Iso-octane		●●●
Methanol		●●●
Methylene chloride		●
Mineral oil		●●●
Nitric acid	10%	●
Nitrohydrochloric acid		●
Oleum		●
Ozone		●
Paraffin		●●●
Petroleum ether		●●●
Phosphoric acid	10%	●
Silicon oils		●●●
Sodium hydroxide	10%	●
Sulphuric acid	10%	●
Tetrahydrofurene		●●●
Toluene		●●●
Trichlorethane		●●
Trichlorethylene		●●
Turpentine		●●●
Xylene		●●

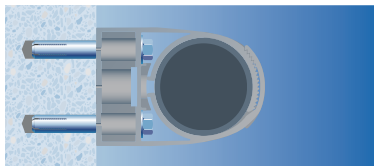
●●● resistant | ●● limited resistance | ● not resistant | ○ soluble, greatly affected

### 8. Installation/mounting

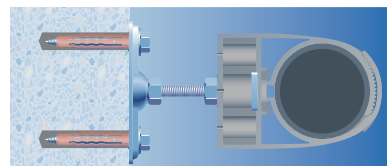


Simply mount CLIC, push pipe in by hand, grips and locks by applying slight pressure.  
To open: unlock the CLIC latch with screwdriver.

#### Examples of concrete base-materials

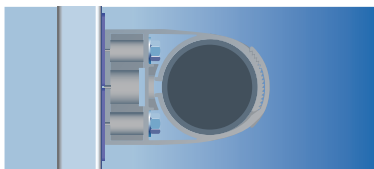


drive-in anchor,  
hex-head screw,  
washer



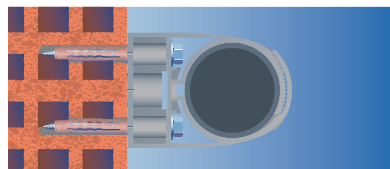
DELTA nylon plug,  
hex-head wood screw,  
washer,  
2-hole base plate,  
hexagon nut,  
CLIC spacer

#### Example of mounting on rail



mounting rail,  
channel nut,  
hex-head screw,  
washer

#### Example of brickwork base-materials



DELTA nylon plug,  
hex-head screw,  
washer

### 9. Testings/authorizations/specifications/compliance

UL  
REACH, RoHS

### 10. Safety data sheet

not required

## 11. Manufacturer/brand/production

EFCO Fixing Technology Ltd  
Grabenstrasse 1 · 8606 Nänikon · Switzerland

**clic**<sup>®</sup> CLIC is a registered international trademark of EFCO and is 100 % Swiss made.  
The CLIC technology is protected by Swiss and international patents held by EFCO.

## 12. Accessories

Further accessories, e.g. spacers, base plates for multiple mountings, are available at the EFCO Shop (online) or are listed in the EFCO catalogue (print or PDF).

## 13. Links/downloads

For further information:

EFCO Website/EFCO Shop <http://www.efco.swiss>  
CLIC-Website <http://www.clic-original.com>

---

*The recommendations and data given are based on our experience to date and are standard values. No liability can be assumed in connection with their usage and processing. In individual cases the chemical resistance has to be verified by your own testings. For further technical information please refer to EFCO.*